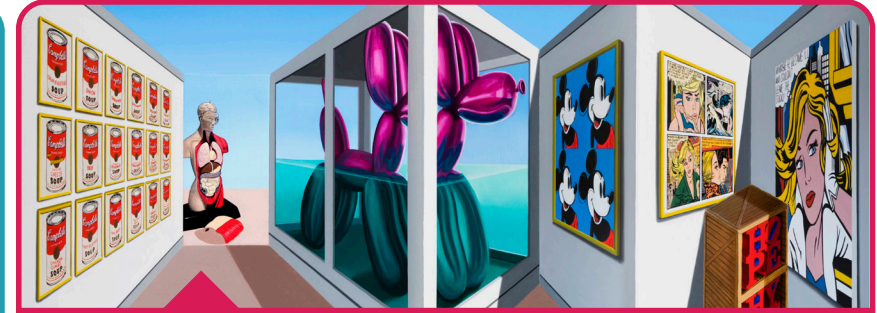


## Sculpture and mixed media

Blend	To gradually and gently join two colours, tones or images together
Cartoon	An illustration or animated film designed to be funny.
Colour wash	A very light layer of colour usually using ink or paint.
Comic	A series of drawings which tell an amusing story.
Dot matrix	A series of dots to create the effect of a colour or tone.
Illustrator	An artist who draws pictures for books.
Pop Art	A simple style using bright colours and everyday objects.
Sculpture	A 3D (solid) piece of artwork.

## Artists' work looked at:



**Roy Lichtenstein**  
An American artist, he was a leading figure in the Pop Art movement.

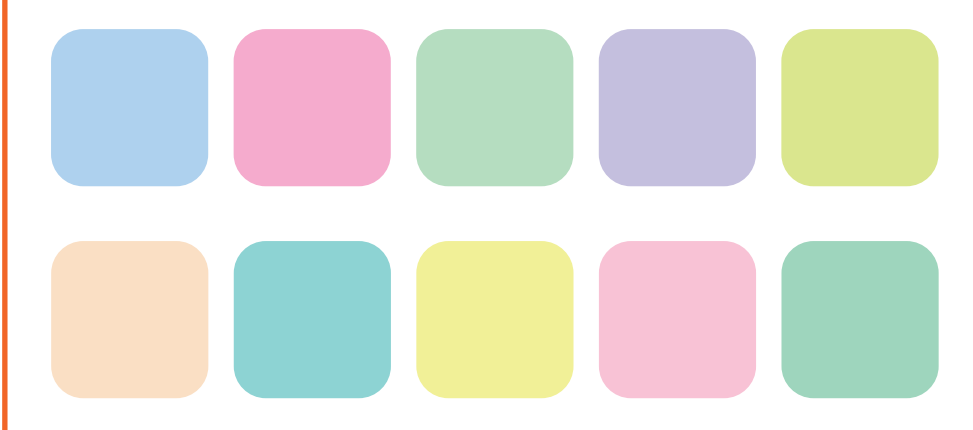
**Leo Baxendale**  
An English cartoonist who created characters for the 'Beano' comic.

## Key facts

I know how to blend colours by mixing at least two colours together.












I know that pastel colours are soft and light colours.



I know how to mix pastel colours by adding white to primary and secondary colours.

I know that when I mix two primary colours together, I will make secondary colours.

	+		=	
Red		Blue		Purple
	+		=	
Yellow		Red		Orange
	+		=	
Blue		Yellow		Green

Facial features are the parts of a person's face such as their nose, eyes and mouth.

